

Unit 1 Sustainability

Section 1

How Does Sustainability Fit Into Your Paradigm and Society's Paradigm?

Sustainability and Changing Paradigms

Our Ancestors had the
following views of the Earth

- It was infinitely large and flat

- The earth was the centre of the universe
- Humans were totally unrelated to other living creatures

- Humans were the rulers over the natural world
- The resources of the earth such as, water, land, air, fish, trees, were in endless supply

Paradigms and Paradigm Shifts

Paradigm

- A way of thinking

Paradigm Shift

- Changes in paradigms

Humans have undergone a paradigm Shift with respect to the Earth.

- Humans no longer regard the earth as the center of the universe

- Humans no longer regard themselves as the masters of the Earth.
- Humans now regard the resources of the earth as being in limited supply

The modern Paradigm of the Earth centers around the principle of **Sustainability**

Sustainability

- We must utilize the resources of the Earth in such a way as to meet both our needs and the needs of future generations

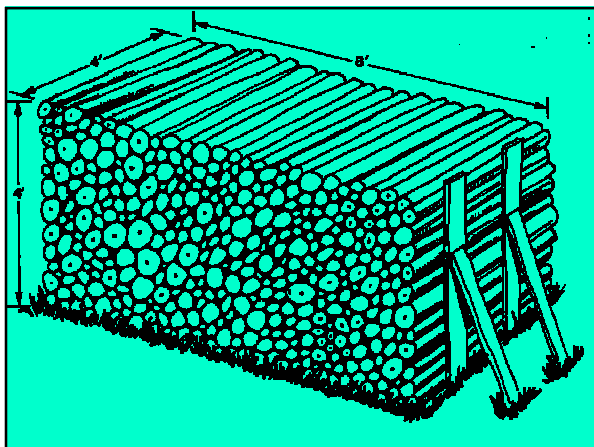
Sustainability and Forestry

Traditional Forestry Methods

- Traditional methods of tree cutting involved usage of axes and saws, horses and sleds.

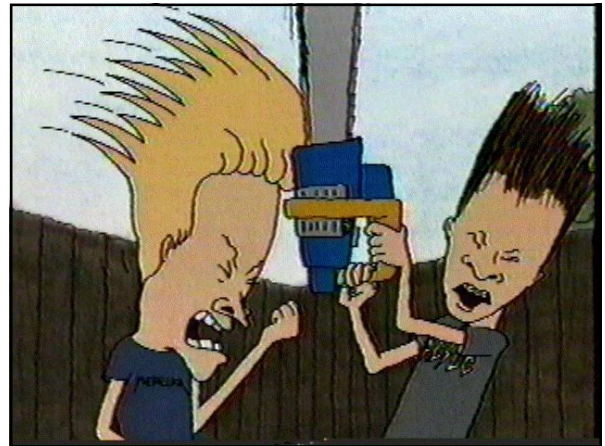


- With this equipment a forester could cut and stack about two cords of wood per day



The chainsaw

- The first chainsaws were not used on a wide scale until the 1950's.
- Chainsaws allowed a single man to be far more productive



Modern Forestry Equipment

- Machinery such as feller-bunchers, skidders, and huge trucks are now used in the forestry industry.



- Modern equipment now makes it possible for two cords of wood to be cut and stacked in minutes

Paradigm Changes with Respect to Forestry

- With an increase in the amount of wood being harvested, there became a need for a new way of thinking about the forest resource

Sustainability and the Fishery

Traditional Fishery Methods

- Traditional fishery practices involved fishing from dories, with jiggers and small nets
- The fisheries in these days was confined to the “inshore” regions



Modern Fishery

- Modern Fishery involves the use of large trawlers that literally scrape the ocean floor for codfish and other species



Paradigm Changes with Respect to the Fishery

- With recent declines in the fish stocks of the North Atlantic, we have been forced to rethink our ideas about sustainability in the fishery

With Respect to the Fishery or Forestry

Sustainable Development involves

- Conservation practices such as:
 - replanting trees after harvesting
 - setting quotas for harvesting fish stocks
- Using the resource for a variety of interests
 - Recreation
 - Economic development
 - protection of habitat, etc.